

D BEB 1 - L100 / EBS 15-03-19 (419 500)

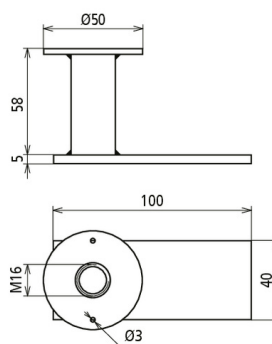


Figure without obligation

Flat steel earthing bridges

The earthing bridges are designed for earthing, return current circuits as well as equipotential bonding in railway line applications. This version is installed flush with the surface and the flat steel is welded to the earthing reinforcement via a defined welding seam. This earthing bridge also has a technical approval from DB Netz AG and can therefore be reliably used in planning.

Type	D BEB 1 - L100 / EBS 15-03-19
Part No.	419 500 NEW
Material of plate	StSt
Material No.	1.4301
Material of socket	St / Cu
Material of flat steel	S235
Short-circuit current	> 25 kA
Test current	40 kA / 100 ms
Standard	Ril 997.0205A01
Short-circuit current (AC 50 Hz / DC) (1 s; ≤ 300°C)	12.6 kA
Thread	M16
Diameter of connection plate	50 mm
Dimensions of flat steel	100 x 40 x 5 mm
Total height	58 mm
DB drawing No.	3 Ebs 15.03.19 - 30
Weight	205 g
Customs tariff number (Comb. Nomenclature EU)	85389099
GTIN	4013364458383
PU	1 pc(s)

We reserve the right to introduce changes in performance, configuration and technology, dimensions, weights and materials in the course of technical progress. The figures are shown without obligation.