

# CF 25 C-Fix for impact mounting 9125

CE 6/2022

## Areas of application:

For mounting pipes to the inner side of plasterboard walls.

## Installation Guide:

- Put the flexible pipe into the CF
- Hammer in the CF at the desired location

## Product details:

Content pack/box 50 / 1.600

Pipe Ø 25

Torque values 9 kg

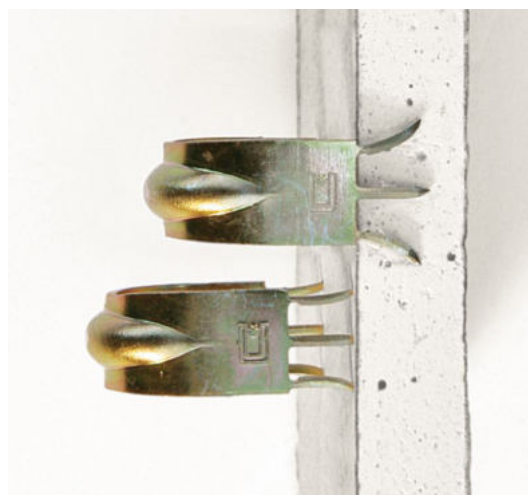
## Product benefits/properties:

The C-Fix clip enables conduits to be mounted to plasterboard walls quickly and easily without drilling. The unique design ensures a strong grip and does not damage the outside of the wall.

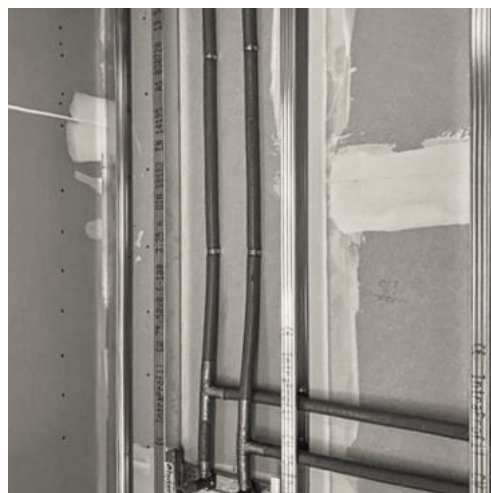
## Technical data:

Material	Chromed steel, category of corrosion C3, raw material fulfilling EU guideline 2002/95/EG RoHS
Weight per piece	7,00 g
Max. recd. load	51.2 N Plasterboard 15 mm, 67.2 N Plasterboard 25 mm
Breaking load	128.00 N (12.8 kg) Plasterboard 15 mm, 168.00 N (16.8 kg) Plasterboard 25 mm

GTIN (EAN)



The C-Fix clip enables conduit to be mounted to plasterboard walls quickly and easily. The unique design ensures a strong grip and does not damage the outside of the wall. The flexible installation pipe is inserted into the CF, the CF is hit with a hammer - done!



Schnabl Stecktechnik GmbH, Bahnhofplatz 1, po box 63, 3100 St. Pölten, Austria  
Telephone +43 2742 22167-0. office@schnabl.works. www.schnabl.works

Only the  
ORIGINAL is  
ingenious

