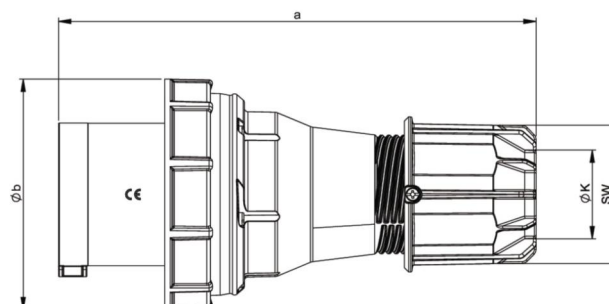
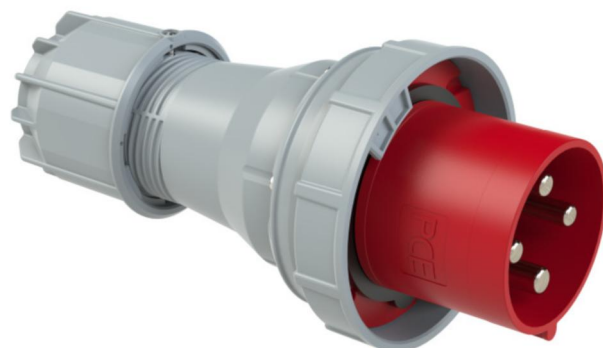


PCE data sheet

| | |
|------------------------|---|
| article# | 044-6 |
| article description | CEE-plug 125A 4p 6h IP67 POWER TWIST |
| description long | CEE-plug 125A 4p 6h IP67 POWER TWIST housing material: PA6 rated current: 125A number of poles: 4 (3P+PE) clock-position: 6h rated voltage/frequency: 380-415V~ / 50+60Hz contacts: brass nickel plated, with pilot pin connection technology: frame terminals with screws IP protection class: IP66/IP67 |
| GTIN (EAN) | 9003399022227 |
| country of origin | AT |
| customs number | 85366990 |
| packaging quantity | 2 |
| minimum order quantity | 2 |

| | |
|----------------------------|----------------------|
| ETIM 7.0 | EC000140 |
| IEC-amperage | 125 A |
| Number of poles | 4 |
| Voltage acc. EN 60309-2 | 400 V (50+60 Hz) red |
| Clock hour position | 6 h |
| Identification colour | Red |
| RAL-number | 7046 |
| Degree of protection (IP) | IP67 |
| Connection system | Screwed terminal |
| Cable entry | Swivel |
| Angle of plug | Straight |
| Material | Plastic |
| Contact material | CuZn |
| Surface treatment contacts | Nickel-plated |

| | |
|--------------------|-----------------------|
| a | 270 mm |
| b | 131 mm |
| K (cable Ø) | 22,5-50 mm |
| SW | 81 mm |
| wire flexible | 16-50 mm ² |
| contact screws | 450 Ncm |
| strain relief | 1500 Ncm |
| dismantling length | 100 mm |
| stripping length | 24-27 mm |



www.manufacturer-safety.info