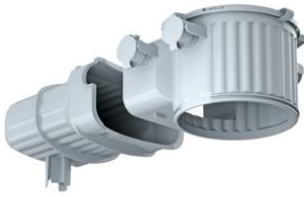


Concrete installation housing HaloX® (on-site mixed concrete)



HaloX® 100 with tunnel 190 for on-site mixed concrete

- Toolless combination entry for M20/M25 conduits
- Conduit entry limitation to prevent the need to shorten the conduit inside
- No reinforcement cuts in tunnel section area

| | |
|--|----------------|
| Order number: | 1281-30 |
| EAN: | 4013456546844 |
| System | HaloX® 100 |
| Ceiling exit (CE) Ø | 0-100 mm |
| Max. installation depth luminaire / loudspeaker | 110 mm |
| LED wattage max. | 20 Watt |
| Lamp wattage max. | 50 Watt |
| Housing diameter Ø | 130 mm |
| Depth incl. front part | 120 mm |
| Tunnel length | 190 mm |
| Tunnel width | 140 mm |
| Tunnel height | 85 mm |
| Combination entry for M20/M25 conduits | 4 |
| Dispatch | 10 |

The shape-retaining HaloX® system has a modular design for fitting in on Site mixed concrete. Three housing diameters with a large number of round, square and universal front parts allow the integration of luminaires and loudspeakers up to an installation diameter of 250 mm, including in facing concrete. With a tunnel, the system provides sufficient space for the fitting of operating devices such as LED drivers. Optional extension rings increase the installation depth. All front parts are moisture-repellent and can be positioned exactly and nailed-on even before the first reinforcement is laid. Housings and front parts are firmly and stably latched together and can still be aligned as required afterwards. By means of the toolless, opening technology with M20/M25 combination entry, conduits can be inserted quickly and easily and even if the population is incorrect, the entry can easily be closed again. It provides secure conduit retention with a depth stop, so there is no need for later internal shortening of the conduits. After casting, front parts with a defined installation diameter can be opened with a targeted blow of the hammer. The front parts for universal opening dimensions can be plastered locally or plastered over. Then cut the required installation opening using standard cutting tools e.g. MULTI 4000.

- For walls and ceilings
- Housings and front parts are latched together securely and sturdily and can also be aligned later as required
- All housing sizes are available with and without a tunnel
- Toolless opening technology for entries M20/M25
- Optimal thermal management on the basis of maximum surface contact to the concrete
- Minimal effect on the statics - no cuts to the reinforcement required in the tunnel area

