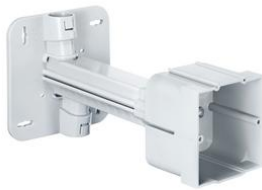


## Telescope equipment carrier and switch box.



### Telescope switch box

- for secure fixing of sockets and much more
- for use with external insulation of walls and ceilings
- with 2 screw domes
- Standardised combination distance 71 mm

<b>Order number:</b>	<b>1159-61</b>
EAN:	4013456537057
Insulation thickness	80 - 200 mm
Depth	50 mm
Length	68 mm
Width	70 mm
Screw spacing	60 mm
Conduit entry M20 on the carrier	2
Cable entries up to Ø 16 mm	2
Dispatch	10

For the safe installation of luminaires, motion detectors and many other accessories in and on insulated facades. Optimised for the latest insulation thicknesses, the telescopic products permit a wide range of applications in external faces with insulation thicknesses from 80 to 200 mm. The two conduit entries on the basic carrier guarantee secure conduit connection. The cable routing which is integrated in the carrier arm ensures a fast, easy cable pull-in.

- Stable fit to walls and ceilings
- For insulation thicknesses from 80 to 200 mm
- Equipment carriers for accessories up to max. 5 kg
- One-gang boxes can be combined with a standardised 71 mm combination distance
- Conduit entries on the carrier with internal cable routing
- Integrated indicated dimension allows easy cutting off to insulation thickness
- Front fixing and depth stop prevent incorrect installation
- Front fixing of the mounting plate/one-gang box

