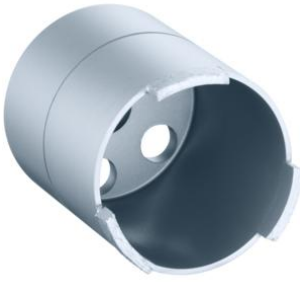


Diamond grinding head and drilling template



Diamond grinding head with dust extractor

- Thread connection M18 x 1.5
- for use with dust extraction, direct or chuck attachment

| | |
|----------------------|----------------|
| Order number: | 1088-03 |
| EAN: | 4013456440111 |
| Drill Ø | 68 mm |
| Cutting depth | max. 70 mm |
| Dispatch | 10 |

Diamond grinding head for precise and quick installation openings for one-gang boxes and one-gang junction boxes in all types of walls. Clean and low-dust handling due to dust extraction.

- Quick creation of installation openings in all types of walls
- For electric drills with direct attachment or 13 mm chuck
- With optional dust extraction
- Drilling template for exact marking of the centering hole