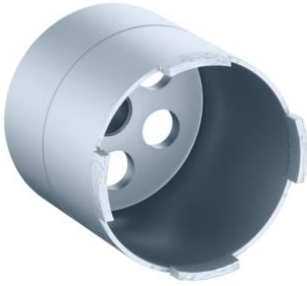


## Diamond grinding head and drilling template



### Diamond grinding head with dust extractor

- Thread connection M18 x 1.5
- for use with dust extraction, direct or chuck attachment

<b>Order number:</b>	<b>1088-02</b>
EAN:	4013456440012
Drill Ø	82 mm
Cutting depth	max. 70 mm

Diamond grinding head for precise and quick installation openings for one-gang boxes and one-gang junction boxes in all types of walls. Clean and low-dust handling due to dust extraction.

- Quick creation of installation openings in all types of walls
- For electric drills with direct attachment or 13 mm chuck
- With optional dust extraction
- Drilling template for exact marking of the centering hole