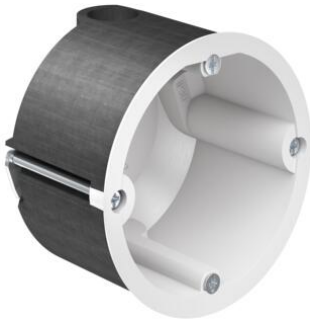


HWD 90 cavity wall boxes



HWD 90 one-gang junction box

- For fire-protection walls EI30 - EI120
- Also for installation shafts / installation ducts I30 - I90
- also for timber frame or timber panel walls EI30-EI60

| | |
|--|----------------|
| Order number: | 9464-01 |
| EAN: | 4013456531666 |
| For panel thickness | 7 - 40 mm |
| Depth | 54,5 mm |
| Cut hole Ø | 74 mm |
| Screw spacing | 60 mm |
| Cable entries of up to Ø 11.5 mm | 4 |
| Support connectors for each package | 5 |
| DIBt approval | Z-19.21-1788 |
| ETA approval | ETA-18/0091 |
| Combination distance through single separation of the pre-embossed edge | 71 mm |
| alternatively cable entry for three-phase alternating current of up to 5 x 2.5 mm possible | Yes |
| for sound insulation walls up to | 77 dB |
| Halogen-free | Yes |
| Packaging inner/dispatch | 10/100 |

HWD 90 cavity wall boxes for fire-protection walls EI30-EI120 ensure certified electrical installation in accordance with fire protection regulations and are now also approved for timber walls in timber frame or timber panel construction EI30 and EI60. No additional measures, such as encasing, are necessary. The intelligent AFS technology reacts immediately to fire and heat and automatically closes the installation opening. This guarantees the fire resistance class of the fire-protection wall and secures emergency routes. Use in all fire-protection walls and the fire-resistance duration of up to 120 minutes ensures maximum flexibility, even when the planning is changed. At the same time, it also maintains the wall's sound insulation requirements.

- For fire-protection walls EI30 - EI120
- Maintains the wall's sound insulation protection
- Retrofitting also possible
- With fire-protection cover, can be used as a junction box
- Also for directly opposing installation

