

# TYBOX 5000

**EN** Installation instructions



## TECHNICAL CHARACTERISTICS

- Contact output 2A (230V) - 1.C (brownout)
- Ball test: 125 °C
- Rated surge voltage: 4000V
- Powered by 2 lithium batteries 1.5 V, LR03/AAA (supplied), 5-year life under normal use
- Class II insulation
- Radio frequency 868.7 MHz to 869.2 MHz
- Maximum wireless power: < 10 mW
- Wireless remote control device
- Wireless range: 100 to 300 metres outside, variable depending on the associated equipment (the range can vary depending on the installation conditions and the electromagnetic environment)
- Dimensions: 80 x 84 x 21 mm
- Degree of protection: IP 20
- Wall mounting
- Installation in an environment with normal pollution levels
- Storage temperature: -10 to +70°C
- Operating temperature: 0 to +55°C

## CONTENT

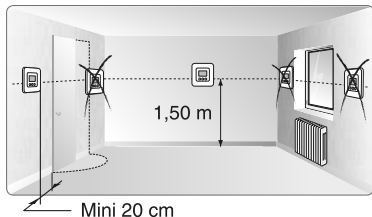
1/ Location	4
2/ Connection	5
2.1 Circulator control	5
2.2 Control of the thermostat input of the boiler or heat pump (HP) no-reversible	6
3/ Mounting	8
4/ Configuration	9
5/ Compatible options	14
6/ Troubleshooting	15

## 1/ LOCATION

Since the temperature measurement sensor is inside the box, you must install the thermostat flush-mounting box:

- on an accessible wall at a height of 1.50 m
- away from heat sources (fireplaces, sunlight) and draughts (windows, doors)

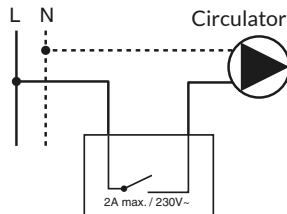
**IMPORTANT:** Do not install the thermostat on a wall in contact with the outdoors or with an unheated room (e.g. garage, etc.) The sleeve output in the flush-mounting box must be blanked off (with mastic) in order to avoid unwanted air movements that could bias the sensor reading.



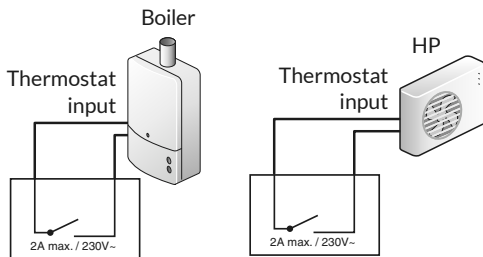
## 2/ CONNECTION

The diagrams provided are simplified for greater clarity. Protections and other accessories required by standards are not illustrated. - Standard NF C15-100 and good practice must be complied with. Connected or nearby units must not generate excessive interference (directive 89/336/EEC).

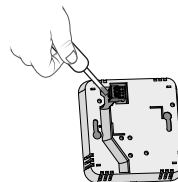
### 2.1 Circulator control



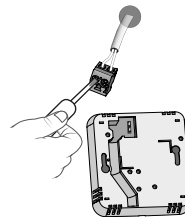
### 2.2 Control of the thermostat input of the boiler or heat pump (HP) no-reversible



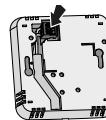
**1** Remove the terminal, on the back of the device, using a screwdriver.



**2** Connect the terminal to the control wire (circulator, boiler or heat pump thermostat input).

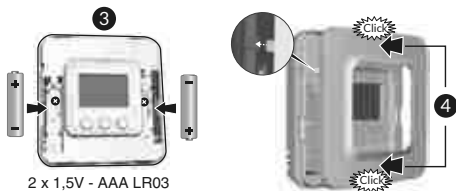
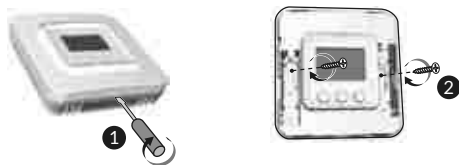


**3** Fit the terminal back into its position.



## 3/ MOUNTING

- 1 Remove the thermostat cover by pushing the pin using a screwdriver.
- 2 Attach the base by using suitable fixings for mounting. Fit the cover back onto the thermostat.
- 3 Insert the batteries, with the right polarity



## 4/ CONFIGURATION

This menu is used to determine all the settings adapted to your installation.

- 1 To enter configuration mode, press the **MODE** button for 10 seconds until the screen displays **CF01**.
- 2 Press + or - to set.
- 3 Briefly press **MODE** to go to the next menu. Press **MODE** or wait 5 seconds to exit.

**CF01 - Correcting the temperature measured**  
Setting from -5°C to +5°C

**Example:** If the temperature displayed by the unit is 15°C and the actual temperature (thermometer) is 16°C, set +1°C.

**CF02 - Settings lock**

0	No locking (default setting)
1	Total locking
2	Partial locking. Modification of the temperature setting at +/-2°C

The screen will display '\_\_\_' if it is locked  
To unlock (selection 1 and 2), simultaneously press + or - the buttons for 10 seconds.

**CF04 - Frost protection mode temperature setting**

Setting of 5°C to 15°C. Default value: 10°C.

**CF05 - Type of temperature displayed in AUTO mode**

0	Temperature setting permanent display (default selection)
1	Permanent display of the measured room temperature.

1: Pressing the + or - button once displays and sets the temperature setting (in **ON** mode).

**CF06 - Regulation time base**

15	15 minutes (default settings)
30	30 minutes
45	45 minutes
60	60 minutes
On/Off	On/Off

### CF07 - Modification of the on/off regulation hysteresis

Only displayed if menu CF06 = on/off

Setting of 0.2°C to 2°C. Default value: 0.4°C

### CF08 - Anti-seize function

The Anti-seize function activates the circulator 1 minute per day to prevent any seizing up during a non-heating period.

0	Anti-seize disabled
1	Anti-seize enabled (default settings)

### CF09 - Reversal of relay direction

The relay contact is normally open. It closes during a heating request. You can reverse the direction of operation.

0	Normally open (default selection)
1	Normally closed

### CF10 - Return to initial settings

This menu resets all the CF01 to CF09 settings to their default value.

By default CF10 = 0.

To reset, press + to display 1 and confirm by pressing **MODE**.

## 5/ COMPATIBLE OPTIONS

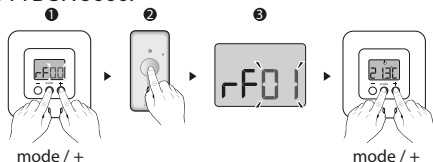
### Association with a TYDOM home automation box

Your TYBOX 5000 can be used as a connected thermostat, if it is associated with a TYDOM home automation thermostat. Remote control and programming from a tables or smartphone with the TYDOM application.

### Association with a door/window magnetic contact (DO / MDO / DOI TYXAL+)

If a door/window magnetic contact (e.g. window) is associated with the TYBOX 5000, the heating switches to Frost Protection mode when an open window is detected.

- 1 Press the + and **MODE** buttons simultaneously until the screen shows for example rF00.
- 2 On the door/window magnetic contact, press the button.
- 3 Check that the screen evolved and shows rF01 on TYBOX 5000.

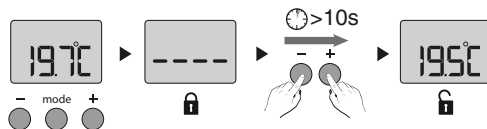


## 6/ TROUBLESHOOTING

When you press a button, the screen displays: ----  
Access to the settings is locked.

To unlock, press and hold the + and - buttons for 10 seconds.

Important: if you want to lock the device again, refer to the configuration menu (CF02).



The screen displays the low battery symbol. Replace the batteries. The batteries are spent.







[www.deltadore.com](http://www.deltadore.com)



2704641 Rev.02