

Conductor Holder and Accessories for Installation on Flat Roofs / Metal Roofs

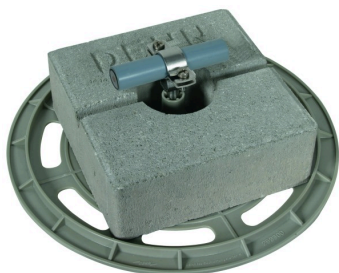


Accessories

DLH ZS 20 23 V2A 4.7KG BES180 GP300 K (253 229)

For flat roofs, weight approx. 4.7 kg.

Conductor holder, concrete block and base plate, for installing the HVI light Conductor, HVI Conductor on flat roofs.



Type	DLH ZS 20 23 V2A 4.7KG BES180 GP300 K 253 229
Material of conductor holder	StSt
Conductor support Rd	20 / 23mm
Height of conductor holder (h1)	87mm
Material of base plate	plastic
Conductor routing	fixed
Block	concrete (C35/45)
Standard	DIN IEC/TS 62561-8 (VDE V 0185-561-8)
Weight	4.89 kg
Customs tariff number (Comb. Nomenclature VAE)	85389099
GTIN	4013364159846
PU	1 Stk

