

Wall-mounted Conductor Holders

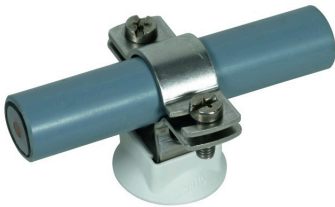
Accessories



LH ZS 20 23 KS H10 V2A (275 259)

With plastic base.

Wall-mounted conductor holder with two-screw clamp (not for use in the sealing end range).



Type	LH ZS 20 23 KS H10 V2A
Part No.	275 259
Material of conductor holder	StSt
Conductor routing	fixed
Conductor support Rd	20 / 23mm
Height of conductor holder	24mm
Thread	M8
Screw	M6 x 16mm
Standard	DIN IEC/TS 62561-8 (VDE V 0185-561-8)
Weight	49 g
Customs tariff number (Comb. Nomenclature VAE)	85389099
GTIN	4013364155633
PU	25 Stk

