

GROUNDING AND BONDING BRAID, STAINLESS STEEL, 70 MM², 400 MM

CATALOG NUMBER

CPI70-400-12



High-quality CPI stainless steel grounding and bonding braids can be installed in extremely corrosive environments, like offshore applications or coastal applications. The full range of CPI braids are ideal for applications using stainless steel pipe or tanks, like the food and beverage industry, building industry, transportation, oil and chemical industry.

nVent ERIFLEX offers 316L stainless steel braids and lugs, one of the highest resistant stainless steel options on the market. Our proprietary manufacturing process has been optimized to provide the best braiding, crimping, cutting and punching.

CERTIFICATIONS



FEATURES

Superior abrasion, corrosion, chemical and UV resistance make CPI braids ideal for outdoor applications

Great for expansion joints where constant movement requires a flexible and durable solution

Ready to use out of the box, eliminates the need for cutting, stripping, crimping and punching

Quick and easy to install

Resistant to vibration and fatigue, reducing maintenance

Will not rust or discolor, so the appearance will never fade or change

Excellent electrical contact

No additional lugs or terminals needed

Non-magnetic material

Recommended by the EMC/EMI directives

Performs to the class C5 (very high) category as per ISO® 12944-2

EAC compliant

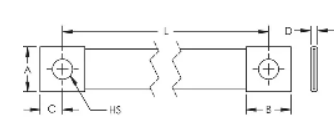
RoHS compliant

Compliant to ISO 6469-1 (Electrically propelled road vehicles - Part 1: Rechargeable energy storage system) - Section 6.2.2 Vibrations

PRODUCT ATTRIBUTES

Article Number: 554370
Material: Stainless Steel 316L (EN 1.4404)
Certification Details: UL® 467
Complies With: IEC® 60439.1; IEC® 61439.1
Cross Section: 70 mm²
Length: 400 mm
Hole Size: 13 mm
A: 30 mm
B: 30 mm
C: 15 mm
D: 5.8 mm
Unit Weight: 0.28 kg

DIAGRAMS



WARNING

nVent products shall be installed and used only as indicated in nVent's product instruction sheets and training materials. Instruction sheets are available at www.nvent.com and from your nVent customer service representative. Improper installation, misuse, misapplication or other failure to completely follow nVent's instructions and warnings may cause product malfunction, property damage, serious bodily injury and death and/or void your warranty.

North America

+1.800.753.9221
Option 1 – Customer Care
Option 2 – Technical Support

Europe

Netherlands:
+31 800-0200135
France:
+33 800 901 793

Europe

Germany:
800 1890272
Other Countries:
+31 13 5835404

APAC

Shanghai:
+ 86 21 2412 1618/19
Sydney:
+61 2 9751 8500



Our powerful portfolio of brands:
nVent.com CADDY ERICO HOFFMAN RAYCHEM SCHROFF
TRACER