

ESP Euro shooting plate 31440

CE 6/2022

Areas of application:

For pipe and cable laying - in conjunction with the EC Euro-Clip system - with the help of shooting apparatus. The two rings of the ESP are matched to the shooting tools from Hilti, Spit and Würth (prod.-nr.: 0864 90).

Installation Guide:

EC in combination with ESP:

- Click the EC to the ESP
- Attach this combination to the muzzle of the shooting device and shoot the ESP at the desired location
- The EC clamp is adjustable after mounting
- Push the pipe into the clamp
- Cables can be attached to the ESP with a cable Tie

Product details:

| | |
|---------------------|-------------|
| Colour | light grey |
| Content pack/box | 100 / 2.000 |
| max. nail thickness | 3 mm |

Mounting and usage instructions:

Clip the EC Euro Clip to the ESP, then press the ESP to the shooting shaft, set up by hand and shoot. The notches of the ESP allow easy adjustment. The EC clamp can be reset as needed and also connected in series. Mounting of the ESP is also possible by a screw. Attention: Working Temperature at min. + 5° C

Product benefits/properties:

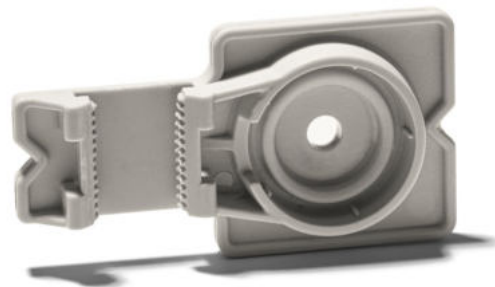
The shooting plates design means it is hidden beneath the pipe, making it virtually invisible after fitting. Several Euro clips can be affixed to just one ESP. Use of a cable tie is also possible. There is a ramp on the side of the ring so that the insertion from both sides is possible.

Technical data:

| | |
|----------|--|
| Material | PA 6, UV stabilised Temperature range: -20 °C up to +85 °C silicon-free halogen-free |
|----------|--|

Weight per piece 2,80 g

GTIN (EAN)



The two rings are matched to the shooting tools from Hilti, Spit and Würth (prod.-nr.: 0864 90). The ESP sticks to the mouth of the shooting pistols from these manufacturers leaving your hands free for mounting.



Schnabl Stecktechnik GmbH, Bahnhofplatz 1, po box 63, 3100 St. Pölten, Austria
Telephone +43 2742 22167-0. office@schnabl.works. www.schnabl.works

