


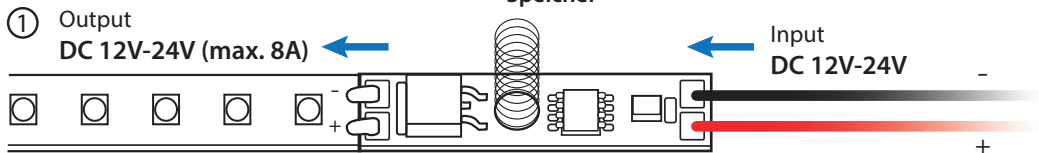
McLED®

ML-113.002.02.0

 Dotykový stmívač LED pásku do hliníkových profilů, s pružinou a paměťovou funkcí

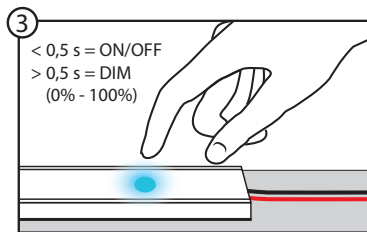
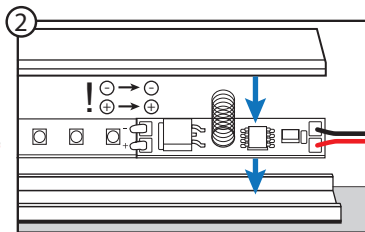
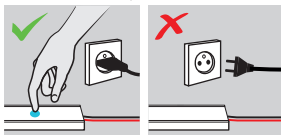
 Touch-cover switch dimmer with spring and LED indicator, memory


 Touch-cover Dimmer mit einem LED Singal-Licht, Speicher





46 x 8 x 20 mm


Memory function




 Montáž by měla provádět osoba způsobilá pro instalaci elektrozařízení.


 Installation should be performed by a person competent in installations of electrical equipment.

 Montáž by mala vykonávať osoba spôsobilá na inštaláciu elektrozaříadení.

 Die Montage sollte durch eine Person erfolgen, welche über die erforderliche Qualifikation zur Installation von Elektrogeräten verfügt.

 McLED s. r. o.
Václavská 185, CZ - 252 50 Vestec
Tel.: +420 220 184 800
e-mail: office@mcled.cz

www.mcled.cz

 Schmachtl GmbH
Pummererstrasse 36, A - 4020 Linz
Tel.: +43 732 7646 0
e-mail: office@mcled.at

www.mcled.at