



UTP	Cat 6	335 67
	Cat 6A	335 85
FTP	Cat 6	335 68
	Cat 6A	335 86

- Installation
- Installatie
- Installation

- Installation
- Installazione
- Instalação

- Εγκατάσταση
- Инсталляция



Cat 6  
Cat 6A

$L1 \leq 90 \text{ m}$   
 $L2 + L3 \leq 10 \text{ m}$

- Câblage
- Bedrading

- Wiring
- Anschluß

- Cablaggio
- Ligações

- Καλωδίωση
- Цοκολέσκα

U/UTP	F/UTP	F/UTP Cat 6A	SF/UTP
<p>332 62</p> <p>50 mm mini</p> <p>80 mm mini</p> <p>10 mm</p> <p>U/UTP</p>	<p>332 62</p> <p>50 mm mini</p> <p>80 mm mini</p> <p>10 mm</p> <p>F/UTP</p>	<p>332 62</p> <p>80 mm mini</p> <p>10 mm</p> <p>F/UTP Cat 6A</p>	<p>332 62</p> <p>80 mm mini</p> <p>10 mm</p> <p>SF/UTP</p>

S/FTP

332 62

80 mm mini

10 mm

S/FTP

F/FTP

332 62

$\text{Ø} > 9 \text{ mm}$

80 mm mini

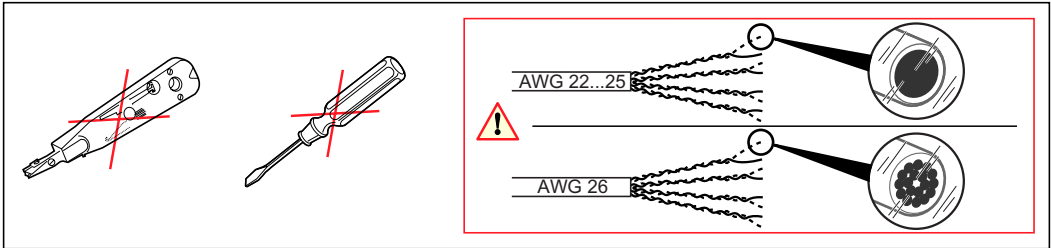
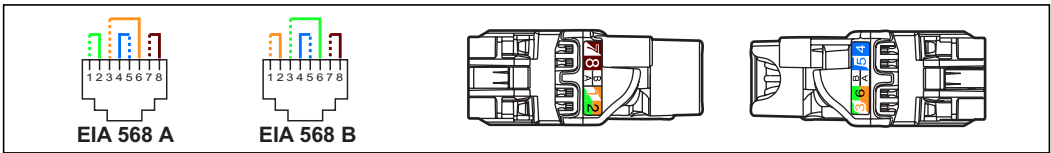
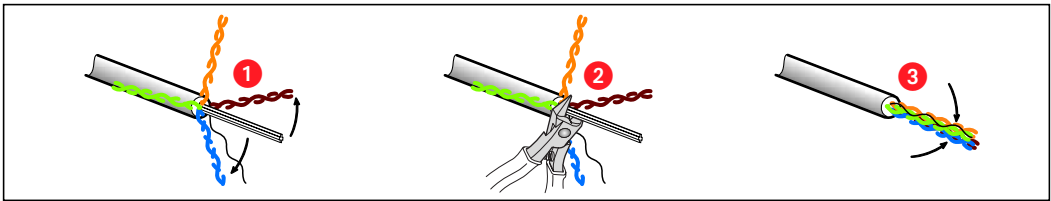
10 mm

F/FTP

$\text{Ø} < 9 \text{ mm}$

80 mm mini

F/FTP

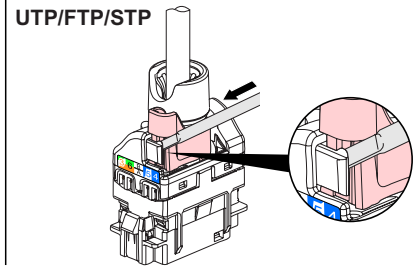
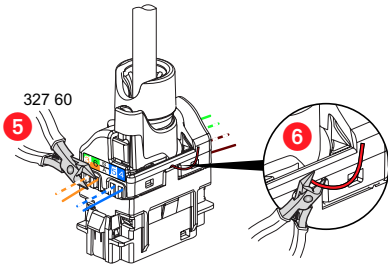
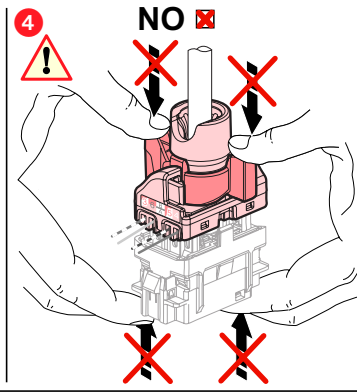
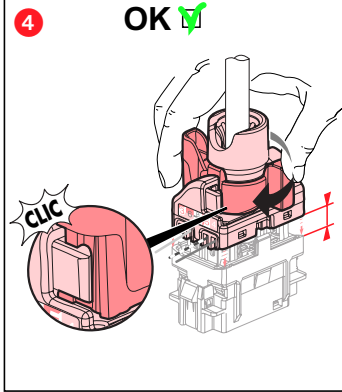
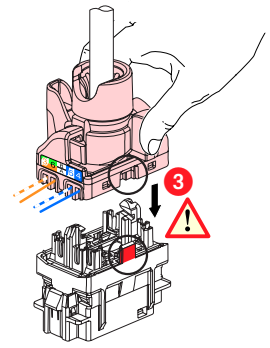
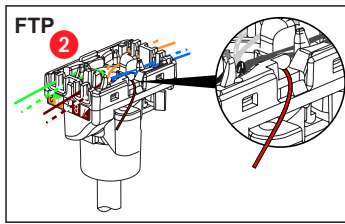


<ul style="list-style-type: none"> <li>• Montage/ Raccordement</li> <li>• Montage/ Aansluiting</li> </ul>	<ul style="list-style-type: none"> <li>• Mounting/ Connection</li> <li>• Einbau/ Anschließen</li> </ul>	<ul style="list-style-type: none"> <li>• Montaggio/ Collegamento</li> <li>• Montagem/ Fixação</li> </ul>	<ul style="list-style-type: none"> <li>• Τοποθέτηση/ Σύνδεση</li> <li>• Монтаж/ подключение</li> </ul>

**UTP FTP Cat 6**

**STP Cat 6A**

UTP/FTP

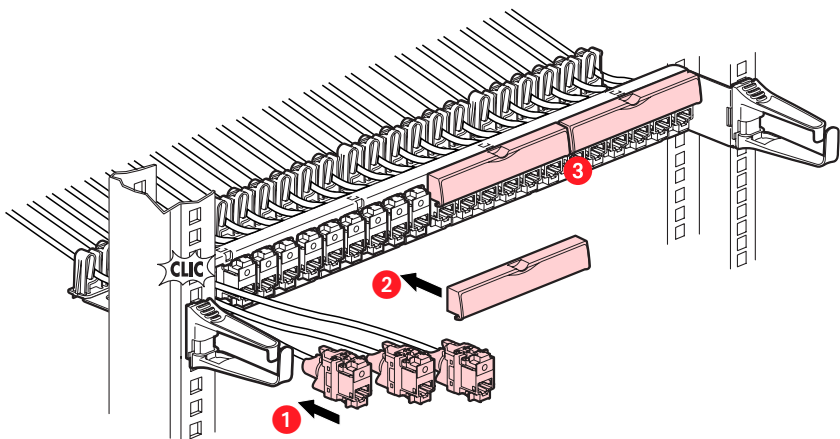


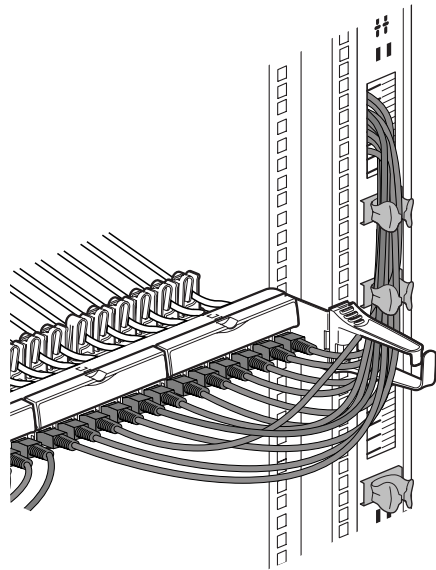
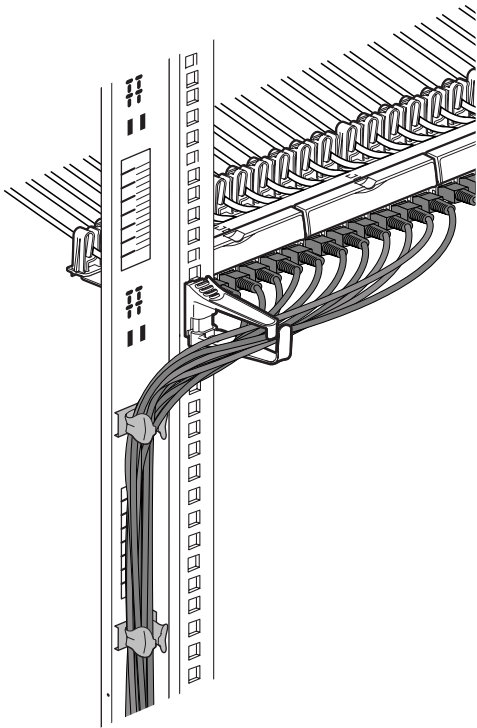
• Montage/  
Raccordement  
• Montage/  
Aansluiting

• Mounting/  
Connection  
• Einbau/  
Anschließen

• Montaggio/  
Collegamento  
• Montagem/  
Fixação

• Τοποθέτηση/  
Σύνδεση  
• Монтаж/  
подключение





**⚠ Consignes de sécurité**

Avant toute intervention, couper le courant.  
Respecter strictement les conditions d'installation et d'utilisation.

(FR) (LU) (BE) (CH)

**⚠ Consignas de seguridad**

Antes de realizar cualquier intervención, cortar la corriente eléctrica.  
Respetar estrictamente las condiciones de instalación y uso.

(ES)

**⚠ Veiligheidsvoorschriften**

Onderbreek voor enige ingreep de stroom.  
Neem de installatie- en gebruiksvoorwaarden nauwgezet in acht.

(NL) (BE)

**⚠ Instruções de segurança**

Antes de qualquer intervenção, desligar a corrente.  
Respeitar rigorosamente as condições de instalação e de utilização.

(PT)

**⚠ Safety instructions**

Make sure the power supply is disconnected before any intervention.  
Strictly comply with instructions for installation and use.

(GB) (IE)

**⚠ Συστάσεις ασφαλείας**

Πριν από οποιαδήποτε επέμβαση, διακόψτε την παροχή ρεύματος.  
Να τηρείτε ανστηρά τις συνθήκες εγκατάστασης και χρήσης.

(GR) (CY)

**⚠ Sicherheitshinweise**

Vor jeglichem Eingriff die Spannungsfreiheit sicherstellen.  
Einbau- und Gebrauchsanleitungen sind genau zu beachten.

(DE) (CH)

**⚠ Меры предосторожности**

Отключить питание перед проведением любых ремонтных работ.  
Строго соблюдайте требования к условиям монтажа и эксплуатации.

(RU)