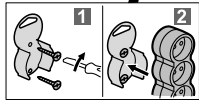
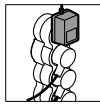
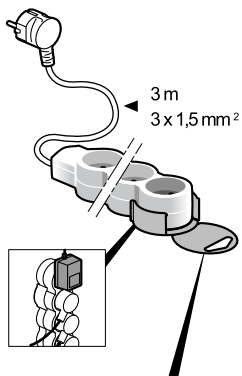
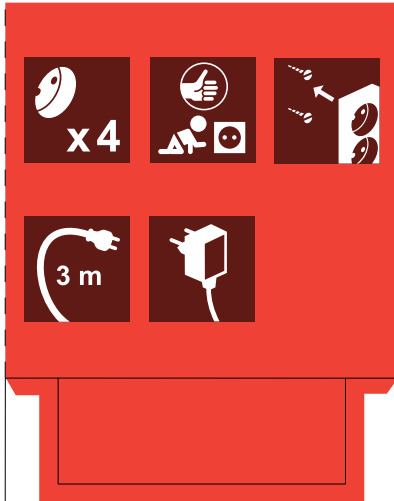


**legrand**<sup>®</sup>

3500 W Max - 230 V ~



**legrand**<sup>®</sup>

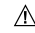


N 0000 13842/02  
© LEGRAND 2006

**legrand**<sup>®</sup>

**Pro and Consumer Service**  
BP 30076  
F - 87002 Limoges Cedex 1  
[www.legrandelectric.com](http://www.legrandelectric.com)

**Service consommateurs**  
0825 360 360 (0,15 €/min TTC)  
[www.legrand.fr](http://www.legrand.fr)

 Respecter strictement les conditions  
d'installation et d'utilisation  
Respecteer strict de installatie- en  
gebruiksvoorwaarden

2  
ans  
Jahre  
year  
años  
GARANTIE  
GUARANTIE  
GARANTIA

