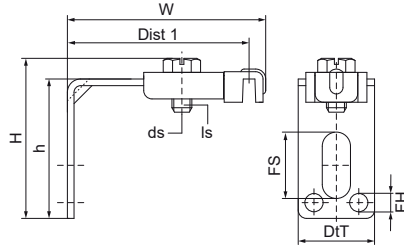
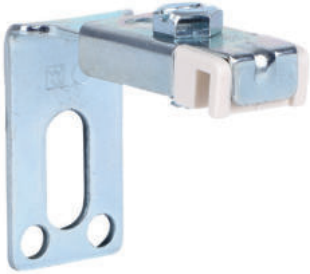


Walraven Radiator Upper/Side Support Insulating

(03040)



Features & benefits

- L-shaped bracket specifically designed for side or top support of a radiator
- features pre-drilled $\varnothing 6$ mm holes and a 8.5 x 20 mm slotted hole for wall attachment.
- includes an insulating shaped channel/clip designed to securely hold the top/side edge of the radiator and reduce unwanted noises.
- adjustable distance from the wall
- material: steel
- zinc plated

Product Number	Total Height	Total Width	Total Depth	Screw Size	Screw Length	Fixing Slot	Fixing Hole	Height
Reference letter	H	W	DtT	ds	ls	FS	FH	h
Unit description	mm	mm	mm		mm	mm	mm	mm
0752400	45	69	23	M6	12	20x8,5	5.5	42