

Technical Data Sheet

Date: 03/11/2022

5x16A CEE N. Angled Panel Mount Socket

Ref. No: 3105-309-1600



Pack Unit

10



Weight

172 gr.

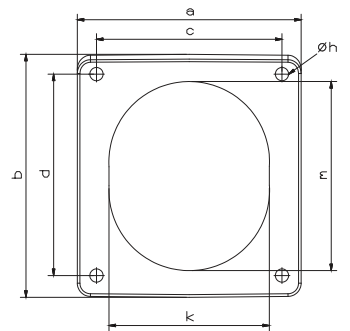
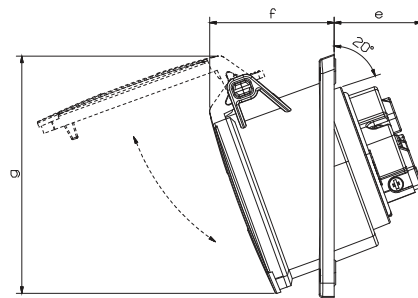


Technical Informations

| | |
|--|----------------------------|
| Ampere | 16A |
| Voltage | 380 - 415 V. AC |
| Hertz | 50 - 60 Hz |
| Protection Class | IP 44 |
| Clock Postion | 6h |
| Number Of Poles | 5 (3P + N + E) |
| Contact Material | Brass (CuZn) |
| Housing Material | PA6 |
| Connection Type | Screw |
| Operation Temp. (-25 / + 40 IEC 60309) | -25 / +80 (1 hour -100° C) |

Dimensions

| | | | |
|------------------------------|-------------------|-----------|----|
| a | 83 | e | 33 |
| b | 90 | f | 47 |
| c | 70 | g | 90 |
| d | 76 | Øh | 5 |
| Cable Diameter (Min.) | 1 mm ² | k | 62 |
| Cable Diameter (Max.) | 4 mm ² | m | 72 |



Different Earth Contact Positions (Clock Positions)

| | | | | | | | |
|--|---|--|--|---|--|--|---|
| >50V 300-500 Hz 2h 3105-309-1100-2h | 220/380V 50 Hz 250/440V 60Hz 3h 3105-309-1600-3h | 57/100V 75/130V 50-60 Hz 4h 3105-309-0700-4h | 347/600V 400/690V 50-60 Hz 5h 3105-309-0300-5h | 200/345V 240/415V 50-60 Hz 6h 3105-309-1600 | 277/480V 288/500V 50-60 Hz 7h 3105-309-0300-7h | 120/208V 144/250V 50-60 Hz 9h 3105-309-0900-9h | 250/440V 265/460V 60 Hz 11h 3105-309-1600-11h |
|--|---|--|--|---|--|--|---|



Tel: +90 232 880 90 01
Fax: +90 232 880 90 02



info@tpelectric.com.tr



Kemalpaşa O.S.B. 600 Sk. No:364
35730 Kemalpaşa - İZMİR / TÜRKİYE