

# Technical Data Sheet

Date: 03/11/2022

## 5x32A CEE N. Angled Panel Mount Appliance Inlet

Ref. No: 3007-318-1600



Pack Unit

10



Weight

400 gr.



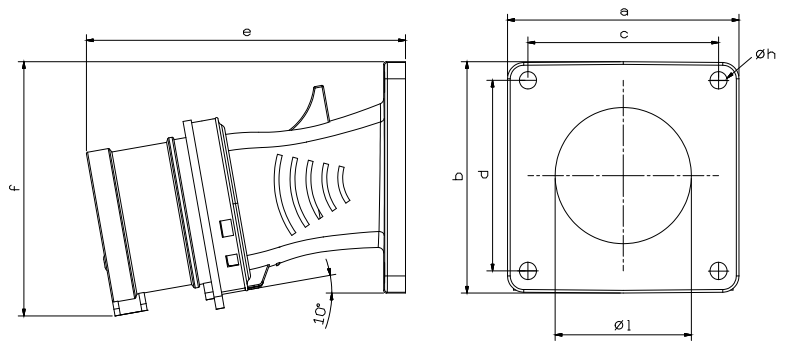
## Technical Informations

Quick Connection

|  |                            |
|--|----------------------------|
| <b>Ampere</b>                                    | 32A                        |
| <b>Voltage</b>                                   | 380 - 415 V. AC            |
| <b>Hertz</b>                                     | 50 - 60 Hz                 |
| <b>Protection Class</b>                          | IP 44                      |
| <b>Clock Postion</b>                             | 6h                         |
| <b>Number Of Poles</b>                           | 5 (3P + N + E)             |
| <b>Contact Material</b>                          | Brass (CuZn)               |
| <b>Housing Material</b>                          | PA6                        |
| <b>Connection Type</b>                           | Quick                      |
| <b>Operation Temp.</b><br>(-25 / + 40 IEC 60309) | -25 / +80 (1 hour -100° C) |

## Dimensions

|                               |                     |           |     |
|-------------------------------|---------------------|-----------|-----|
| <b>a</b>                      | 85                  | <b>e</b>  | 133 |
| <b>b</b>                      | 85                  | <b>f</b>  | 102 |
| <b>c</b>                      | 70                  | <b>Øh</b> | 6,3 |
| <b>d</b>                      | 70                  | <b>Øl</b> | 50  |
| <b>Cable Diameter (Min.)</b>  | 2,5 mm <sup>2</sup> |           |     |
| <b>Cable Diameter (Max.)</b>  | 6 mm <sup>2</sup>   |           |     |
| <b>Cable Diameter (Rigid)</b> | 2,5 mm <sup>2</sup> |           |     |
| <b>Cable Diameter (Rigid)</b> | 10 mm <sup>2</sup>  |           |     |



## Different Earth Contact Positions (Clock Positions)

|                  |                  |                  |                  |               |                  |                  |                   |
|------------------|------------------|------------------|------------------|---------------|------------------|------------------|-------------------|
|                  |                  |                  |                  |               |                  |                  |                   |
| 3007-318-1100-2h | 3007-318-1600-3h | 3007-318-0700-4h | 3007-318-0300-5h | 3007-318-1600 | 3007-318-0300-7h | 3007-318-0900-9h | 3007-318-1600-11h |



Tel: +90 232 880 90 01  
Fax: +90 232 880 90 02



info@tpelectric.com.tr



Kemalpaşa O.S.B. 600 Sk. No:364  
35730 Kemalpaşa - İZMİR / TÜRKİYE