

Technical Data Sheet

Date: 03/11/2022

3x16A CEE N. Panel Mount Appliance Inlet (70x70)

Ref. No: 3020-319-0970



Pack Unit

10



Weight

80 gr.



Technical Informations

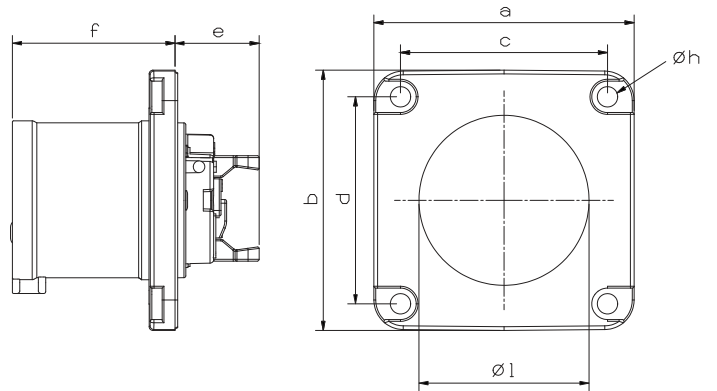
Quick Connection

| | |
|------------------|----------------------------|
| Ampere | 16A |
| Voltage | 200 - 250 V. AC |
| Hertz | 50 - 60 Hz |
| Protection Class | IP 44 |
| Clock Postion | 6h |
| Number Of Poles | 3 (2P + E) |
| Contact Material | Brass (CuZn) |
| Housing Material | PA6 |
| Connection Type | Quick |
| Operation Temp. | -25 / +80 (1 hour -100° C) |
| | (-25 / + 40 IEC 60309) |

| | | | |
|-----------------------|---------------------|----|-----|
| a | 70 | e | 23 |
| b | 70 | f | 44 |
| c | 56 | Øh | 5,5 |
| d | 56 | Øl | 44 |
| Cable Diameter (Min.) | 1 mm ² | | |
| Cable Diameter (Max.) | 2,5 mm ² | | |

Dimensions

| | | | |
|------------------------|---------------------|----|-----|
| a | 70 | e | 23 |
| b | 70 | f | 44 |
| c | 56 | Øh | 5,5 |
| d | 56 | Øl | 44 |
| Cable Diameter (Min.) | 1 mm ² | | |
| Cable Diameter (Max.) | 2,5 mm ² | | |
| Cable Diameter (Rigid) | 1 mm ² | | |
| Cable Diameter (Rigid) | 4 mm ² | | |



Different Earth Contact Positions (Clock Positions)

| | | | | |
|--|--|---|--|--|
| >50V 300-500 Hz 2h 3020-301-1101-2h | 100-130V 50-60 Hz 4h 3020-301-0701-4h | 200-250V 50-60 Hz 6h 3020-301-0901 | 480-500V 50-60 Hz 7h 3020-301-0301-7h | 380-415V 50-60 Hz 9h 3020-301-1601-9h |
|--|--|---|--|--|



Tel: +90 232 880 90 01
Fax: +90 232 880 90 02



info@tpelectric.com.tr



Kemalpaşa O.S.B. 600 Sk. No:364
35730 Kemalpaşa - İZMİR / TÜRKİYE