


79515200	DATA SHEET	
Valid from: 29.08.2022	EPIC® H-A 32 SD	

Description

- The large, robust housing for two inserts of size 16.



General Characteristics

Series	H-A 32
Version	Surface-mount base with cover
Locking	Bolts for double lever
Cable entry	Lateral, see table
Gland body	See table
Protection (DIN EN 60529)	IP 65 (latched)
Temperature Range	-40°C to +100°C, short term up to +125°C

Materials / Surfaces

Housing	Aluminium alloy, powder-coated, grey
Locking	Steel, zinc-plated
Gland body	Brass, nickel-plated
Sealing	NBR
Cover	Aluminium alloy, powder-coated, grey


Standard

Safety Standard	IEC 61984
-----------------	-----------

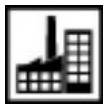
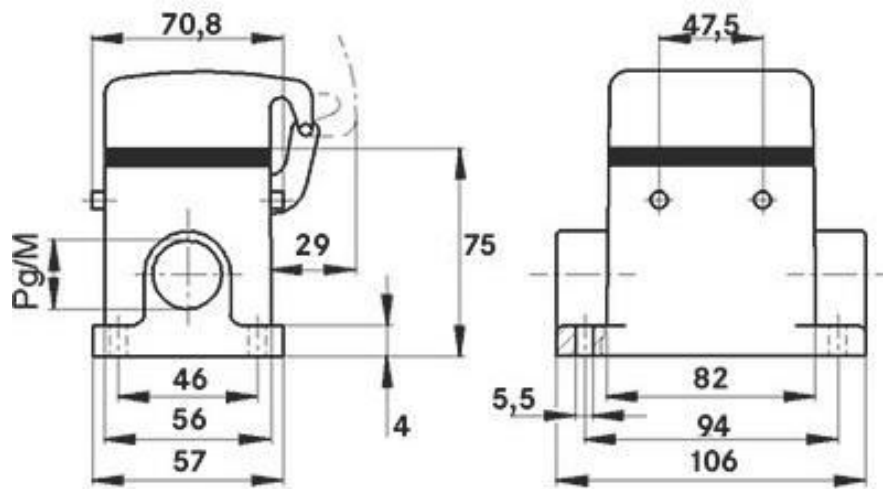
Versions

Article number	Article description	Cable entry (right)	Cable entry (left)	Gland body
70515200	EPIC® H-A 32 SDR-BO 21 ZW	Pg 21	-	Yes
70515400	EPIC® H-A 32 SDR-BO 29 ZW	Pg 29	-	Yes
70516200	EPIC® H-A 32 SDRL-BO 21 ZW	Pg 21	Pg 21	Yes
70516400	EPIC® H-A 32 SDRL-BO 29 ZW	Pg 29	Pg 29	Yes
79515200	EPIC® H-A 32 SDR-BO M25 ZW	M25	-	Yes
79515400	EPIC® H-A 32 SDR-BO M32 ZW	M32	-	Yes
79516200	EPIC® H-A 32 SDRL-BO M25 ZW	M25	M25	Yes
79516400	EPIC® H-A 32 SDRL-BO M32 ZW	M32	M32	Yes

Creator: BEGE1/PDP Released: IVSE1/PDP	Document: DB79515200EN Version: 00	Page 1 of 2
---	---------------------------------------	-------------

79515200	DATA SHEET	
Valid from: 29.08.2022	EPIC® H-A 32 SD	

Technical Drawings



Industrial machinery and plant engineering



Mechanical resistance



Robust



Waterproof

Application range

Machine and equipment manufacturing, Control engineering

Remark

Photographs are not to scale and do not represent detailed images of the respective products.

Creator: BEGE1/PDP Released: IVSE1/PDP	Document: DB79515200EN Version: 00	Page 2 of 2
---	---------------------------------------	-------------