


44423250	<b>DATA SHEET</b>	
Valid from: 29.08.2025	<b>EPIC® MH SCEM AG 1.5sqmm D=4.0</b>	

## Description

- For Modules of the EPIC® MH System
- Crimp connection for permanent vibration-proof contact




## General characteristics

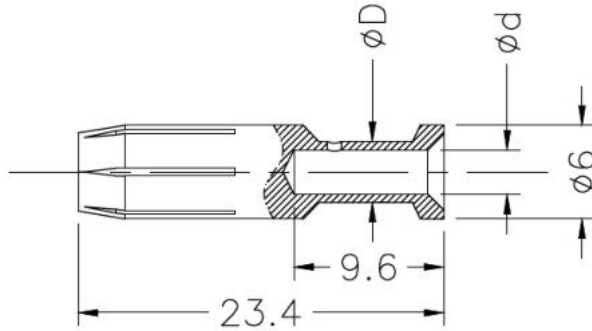
Contact type	Male / female
Mating cycles	500
Material	Copper alloy
Temperature range	-40° C to +125° C

Artikelnummer <i>Material number</i> Numero de l'article	Artikelbeschreibung <i>Material description</i> Description de l'article	Kontakttyp <i>Contact type</i> Type de contact	Leiterquerschnitt <i>Conductor cross-section</i> Section de conducteur [mm <sup>2</sup> ]	Oberfläche <i>Surface</i> Superficie
44423250	EPIC® MH SCEM AG 1.5sqmm D=4.0	Stift	1,5	Ag
44423255	EPIC® MH BCEM AG 1.5sqmm D=4.0	Buchse	1,5	Ag
44423251	EPIC® MH SCEM AG 2.5sqmm D=4.0	Stift	2,5	Ag
44423256	EPIC® MH BCEM AG 2.5sqmm D=4.0	Buchse	2,5	Ag
44423252	EPIC® MH SCEM AG 4sqmm D=4.0	Stift	4	Ag
44423257	EPIC® MH BCEM AG 4sqmm D=4.0	Buchse	4	Ag
44423253	EPIC® MH SCEM AG 6sqmm D=4.0	Stift	6	Ag
44423258	EPIC® MH BCEM AG 6sqmm D=4.0	Buchse	6	Ag
44423254	EPIC® MH SCEM AG 10sqmm D=4.0	Stift	10	Ag
44423259	EPIC® MH BCEM AG 10sqmm D=4.0	Buchse	10	Ag

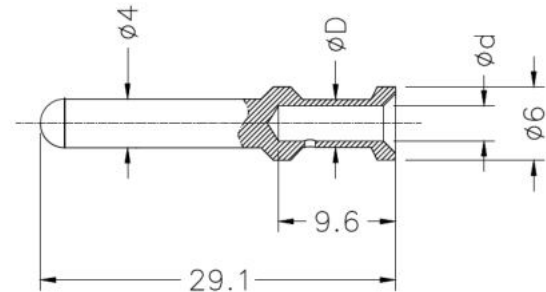
Creator: THB01/BU EPIC Released: JUKL2/BU EPIC	Document: DB44428250EN Version: 04	Page 1 of 2
---	---------------------------------------	-------------

44423250	<b>DATA SHEET</b>	
Valid from: 29.08.2025	<b>EPIC® MH SCEM AG 1.5sqmm D=4.0</b>	

## Technical Drawings



Drawing female contact



Drawing male contact

Material number	Material description	d [mm]	D [mm]	Stripping Length [mm]
44423250	EPIC® MH SCEM AG 1.5sqmm D=4.0	1,75	3	9,0
44423255	EPIC® MH BCEM AG 1.5sqmm D=4.0	1,75	3	9,0
44423251	EPIC® MH SCEM AG 2.5sqmm D=4.0	2,25	3,5	9,0
44423256	EPIC® MH BCEM AG 2.5sqmm D=4.0	2,25	3,5	9,0
44423252	EPIC® MH SCEM AG 4sqmm D=4.0	2,85	3,9	9,6
44423257	EPIC® MH BCEM AG 4sqmm D=4.0	2,85	3,9	9,6
44423253	EPIC® MH SCEM AG 6sqmm D=4.0	3,5	5,6	9,6
44423258	EPIC® MH BCEM AG 6sqmm D=4.0	3,5	4,6	9,6
44423254	EPIC® MH SCEM AG 10sqmm D=4.0	4,3	5,6	15,0
44423259	EPIC® MH BCEM AG 10sqmm D=4.0	4,3	5,6	15,0

## Note

Photographs are not to scale and do not represent detailed images of the respective products.

Creator: THB01/BU EPIC Released: JUKL2/BU EPIC	Document: DB44428250EN Version: 04	Page 2 of 2
---	---------------------------------------	-------------