



TRAPEZE SWAY BRACE, STRUT

CATALOG NUMBER

CSBR2



CERTIFICATIONS



FEATURES

Seismically braces trapeze hangers

Retrofit ability allows for the brace to be installed after the trapeze assembly is installed

One wrench size fits all required hardware, eliminating the need to change tools

Shear-off head helps ensure correct torque and simplifies inspection

FM® Specification Tested

PRODUCT ATTRIBUTES

Article Number: 404567

Material: Steel

Finish: Electrogalvanized

Rod Size: M10;M12;M16;M20

Width: 81.3 mm

Thickness: 3.4 mm

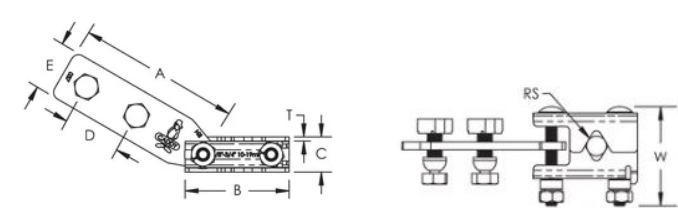
- A: 133.4 mm
- B: 86.4 mm
- C: 29 mm
- D: 47.8 mm
- E: 41.1 mm

ADDITIONAL PRODUCT DETAILS

Cut length for strut member is +/- 1" (25 mm) of measured length.

FM Loads					
Part Number	Brace Member	Horizontal Capacity per Installation Angle from Vertical			
		30° - 44°	45° - 59°	60° - 74°	75° - 90°
CSBR2	41 x 41 Strut Channel	4585 N	8060 N	8895 N	9920 N

DIAGRAMS



WARNING

nVent products shall be installed and used only as indicated in nVent's product instruction sheets and training materials. Instruction sheets are available at www.nvent.com and from your nVent customer service representative. Improper installation, misuse, misapplication or other failure to completely follow nVent's instructions and warnings may cause product malfunction, property damage, serious bodily injury and death and/or void your warranty.

North America

+1.800.753.9221

Option 1 – Customer Care

Option 2 – Technical Support

Europe

Netherlands:

+31 800-0200135

France:

+33 800 901 793

Europe

Germany:

800 1890272

Other Countries:

+31 13 5835404

APAC

Shanghai:

+ 86 21 2412 1618/19

Sydney:

+61 2 9751 8500



Our powerful portfolio of brands:
nVent.com CADDY ERICO HOFFMAN RAYCHEM SCHROFF
TRACER